

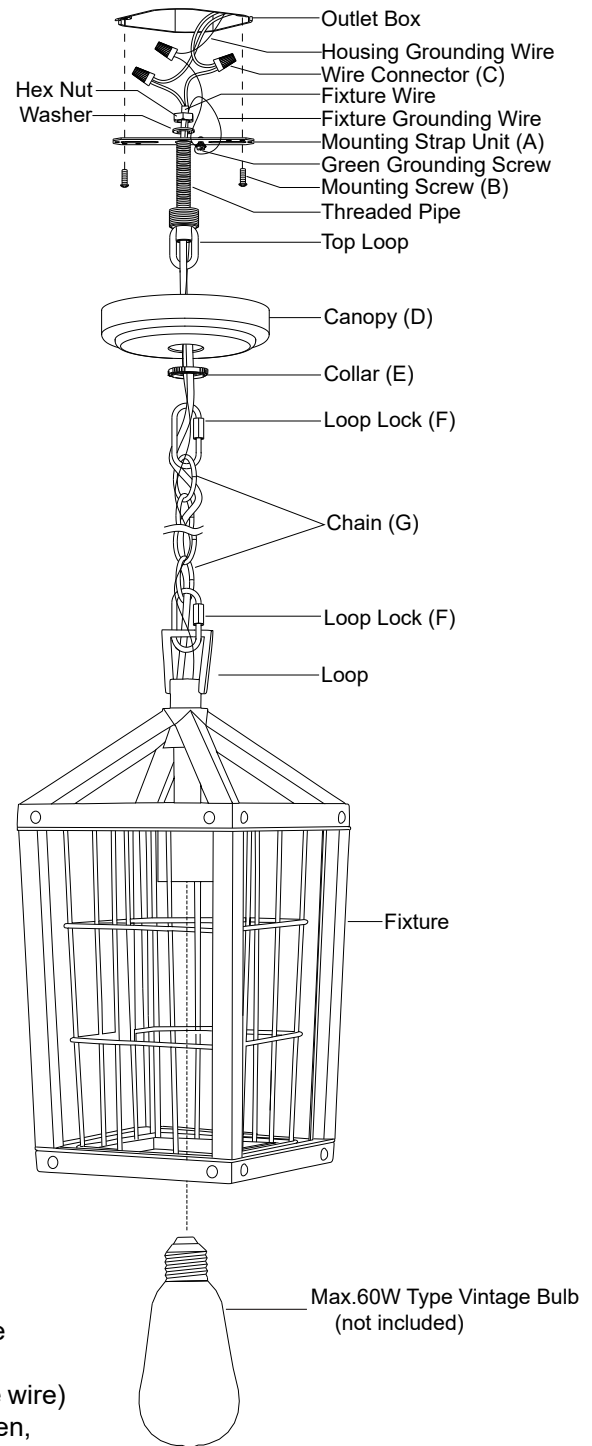
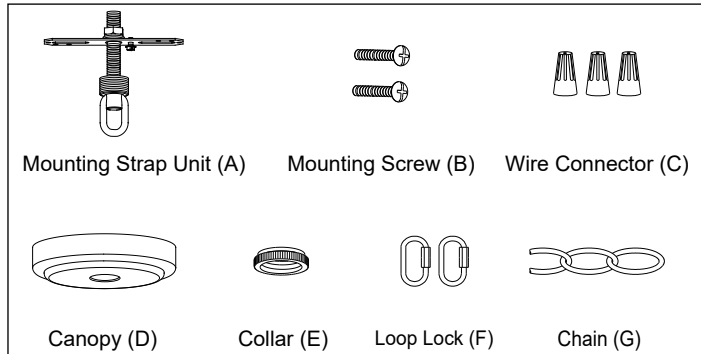
ASSEMBLY AND INSTALLATION INSTRUCTIONS

T0590

WARNING: Turn off the main power at circuit breaker before installing fixture.
AVERTISSEMENT: Coupez la source d'alimentation principale au panneau central de disjoncteurs avant d'installer le luminaire.

NOTE: 1. Before installing, consult local electrical codes for wiring and grounding requirements.
2. READ AND SAVE THESE INSTRUCTIONS.

Hardware Package(inculded):



Installation Steps

Turn off the power at fuse or circuit box.

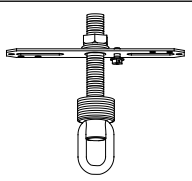
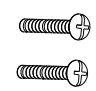
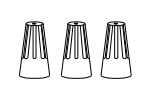
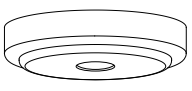

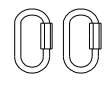
1. Attach the mounting strap unit (A) to the outlet box by using two mounting screws (B).
2. Choose the length of the chain (G) you need, then weave the fixture wire and the fixture grounding wire through the chain (G), collar (E) and canopy (D).
3. Connect one end of the chain (G) with the loop by using a loop lock (F).
4. Connect the other end of the chain (G) with the top loop by using another loop lock (F).
5. Thread the fixture wire and fixture grounding wire through the top loop, threaded pipe and mounting strap unit (A).
6. Pull out the source wires from the outlet box.
Make wire connections using wire connectors (C) as follows:
 - Connect the hot wire (usually black insulation) from the fixture to the black wire from the power source.
 - Connect the neutral wire (usually white insulation) from the fixture to the white wire from the power source.
 - Attach the fixture grounding wire (usually green insulation or bare wire) to the mounting strap unit (A) with the green grounding screw. Then, depending on local code, connect it to the house grounding wire with the wire connector (C).Carefully put all of the wires back into the outlet box.

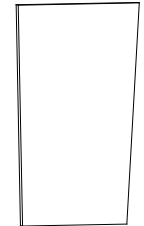
7. Attach the canopy (D) to the mounting strap unit (A) by inserting the top loop, then secure it with the collar (E).
8. Install the bulb (not included). See relamping label at socket area or packaging for maximum wattage allowed.

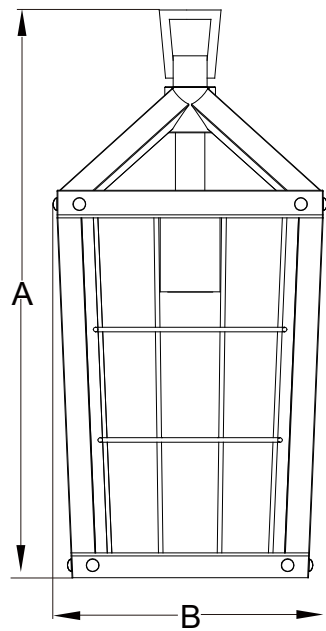
Turn on the power at fuse or circuit box.

The following parts are available for re-order if damaged or missing.

Spare Parts List:

 Mounting Strap Unit (A)	 Mounting Screw (B)	 Wire Connector (C)	Assembly Kit 6308MM (1 SET)
 Canopy (D)	 Collar (E)	 Loop Lock (F)	


 Glass Panel
 X4
 10203CS



A: 14-1/2"
B: 7"